

Paste the errata carefully on the following pages with teacher's help:
 Sila tampal erata ini dengan teliti pada halaman yang berikut dengan bantuan guru:

Page 16
 Halaman 16

Elephants stay in their **herds**.
 How does this behaviour
 protect their **calves**?



Page 17
 Halaman 17

A tiger will take care of her cubs until they are six
 to eight weeks old. Attacking the enemies is a
 way the mother protects its cubs.

Page 20
 Halaman 20

Animals and plants may become
 extinct because of some other
 factors. These include illegal hunting,
 deforestation and natural disasters.



Page 36
 Halaman 36

The laundry uses the Sun's heat to dry.

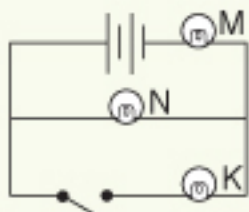


The Sun's heat dries the laundry.

Page 38
 Halaman 38

chemical energy → light energy + heat energy

Page 55
 Halaman 55
 (Question 4)
 (Soalan 4)



- C. I, II and III only
 D. I only

Page 63
 Halaman 63



A driver can see an oncoming
 car from the **convex mirror**.

Page 65
 Halaman 65

7. Many devices in our everyday life use the principle of light reflection such as dental mirror, periscope, side mirror of a car and convex mirror on a sharp bend of a road.